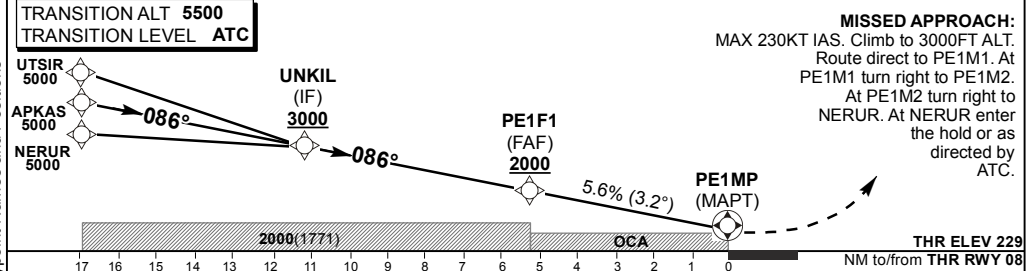


	25°10'E	25°20'E	25°30'E	25°40'E
<b>DIST (NM) to THR 08</b>	11.1	10.1	9.1	8.1
<b>DIST (NM) to Next WPT</b>	UNKIL	5	4	3
<b>ADVISORY ALT (HGT)</b>	3000(2771)	2840(2611)	2670(2441)	2500(2271)
		2340(2111)	2170(1941)	2000(1771)
			1630(1401)	1290(1061)
				960(731)
				620(391)
				280(51)



Straight-in Approach	MIN TEMP: 0°C				GS	KT	80	100	120	140	160
	A	B	C	D							
LNAV	OCA(H) 750 (521)	750 (521)	750 (521)	750 (521)	FAF to MAPT	M:S	3:51	3:05	2:34	2:12	1:55
VNAV	OCA(H) 723 (494)	723 (494)	723 (494)	723 (494)	Rate of descent	FPM	448	560	672	783	895
RVR	1500m	1500m	1800m	2000m	2.5% Climb Gradient	FPM	203	253	304	354	405
ALS OUT	1500m	1500m	2000m	2000m	NOTE: 1. Turns prior PE1MP prohibited. 2. RoD 5.6% (3.2°).						
Circling	Circle to land at the discretion of the pilot in command										